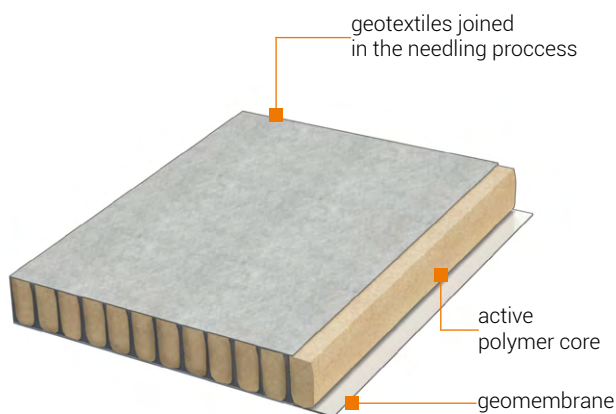


ULTRASEAL XP - composite hydro-insulating membrane consisting of polymer layers in high-strength geomembranes and geotextile. In contact with water, the active layer of polymer seals the structure by swelling.



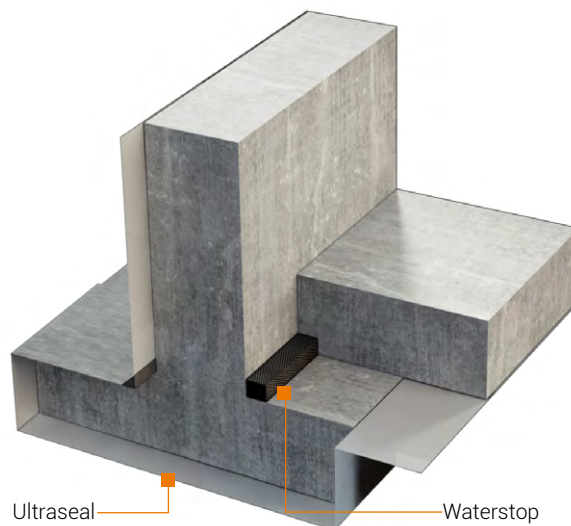
Application:

- chemically contaminated ground
- salty environment
- waterproofing
- vertical and horizontal hydro-insulations of foundations
- underground parts of buildings
- opencast tunnels



CROSS-SECTION OF ULTRASEAL

Ultraseal XP is placed with geotextile the from side of element concreting.



SLAB ON COMBINED FOOTING

Advantages:

- wide hydro-insulation application
- ensures the tightness of the structure during constant or periodical hydrostatic pressure
- resistance in the chemical and salted environment
- easy installation - light and flexible membrane
- strong mechanical bond with fresh concrete
- possibility of installation during difficult weather conditions

ARTICLE NUMBER	TYPE	TYPE OF MATS	WIDTH [mm]	LENGTH [m]	QUANTITY [packs]
240-01	Ultraseal XP	Polymer	1150	8.7	10 m ²
240-02	Ultraseal XP	Polymer	2200	9.1	20 m ²

CHARACTERISTICS	
Swelling material	polymer
Permeability	up to 70 m water
Elongation at break	25%
Adhesion to concrete	1.7 kN/m
Resistance to penetration	3.0 kN
Flexibility at low temperature	no change to - 32°C
Tensile strength	8.0 N/mm ²

