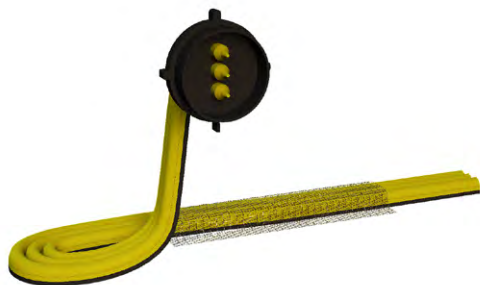


INJECTION - system of sealing construction joints involving the injection of resin in place of connection of RCC elements.



TRIOPRESS
injection hose three-ducted
enables making injection three times

Resins are spread under pressure by injection hoses.

Injection hoses are fitted in construction joints while working with RCC elements.

Standard length: L = 6 m.

Overlap is equal min. 20 cm.



ECOPRESS
one-ducted injection hose



UNIJET
one-ducted injection hose with braid



SWELLINJECT
Ecopress hose specially connected
with Waterstop RX L = 5 m

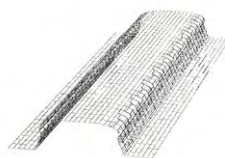
ACCESSORIES



ECOPRESS VALVE
valve for one-ducted
Ecopress and Unijet hoses



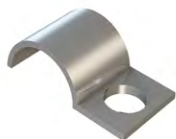
TRIOPRESS VALVE
valve for three-ducted
Triopress hose



REVOFIX MESH
used for installation injection hoses
standard length: L = 1 m



BLUE AND RED CONNECTORS
used for connecting injection
hoses with valves



METAL CLIP
used for installation
injection hose to concrete



SUPERGLUE
used for connecting injection
hoses with red and blue connectors

Set:

- Ecopress 40 m (5 pcs. x 8 m)
- valve 10 pc.
- blue connector 2.15 m (5 pcs. x 0.43 m)
- red connector 2.15 m (5 pcs. x 0.43 m)
- Superglue 1 pc
- metal clips 100 pcs

Non-standard orders are available.

ARTICLE NUMBER	TYPE	[m/pack]	[pcs/pack]
204-01	Unijet - injection hose with braid	100	-
204-02	Ecopress - injection hose	100	-
204-03	Swellinject	30	-
204-11	Triopress - injection hose	100	-
204-04	Valve Triopress	-	20
204-06	Valve Ecopress	-	20
204-05	Revofix mesh	50	-
204-07	Connector	100	-
204-08	Metal clip	-	100
204-09	Set		

