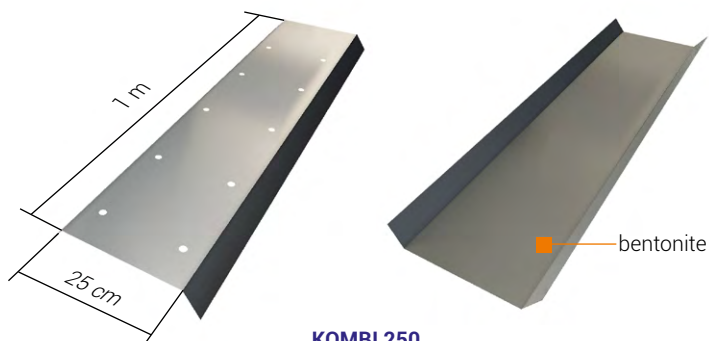


KOMBI - galvanised metal sheet covered with bentonite. Bentonite is secured by self-soluble organic foil.

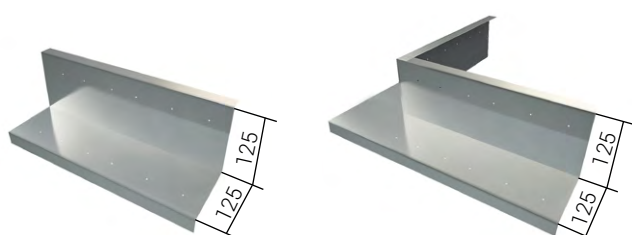


KOMBI 250
basic element of the system

Using for sealing:

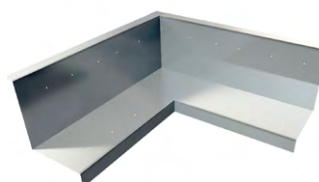
- walls made with concrete blocks
- walls made with precast elements
- damaged structures

Metal sheet has bent edges, along which holes are drilled.



KOMBI 125
fitted element between
slab and wall dimension:
125 x 12.5 x 12.5 cm

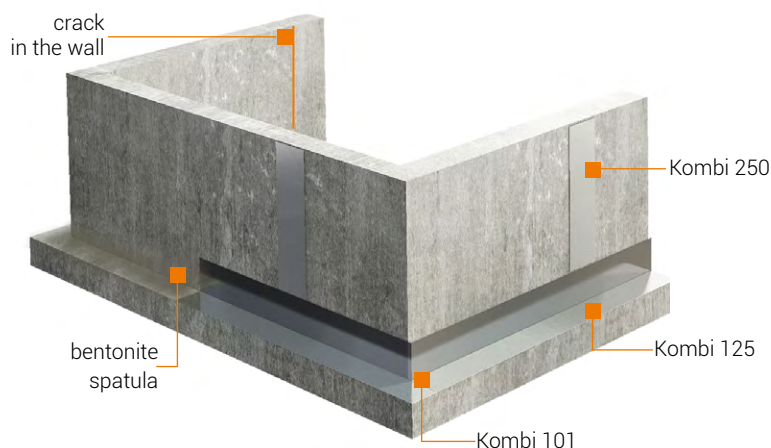
KOMBI 101
external corner dimension:
125 x 125 mm



KOMBI 102
internal corner dimension:
125 x 125 mm



BENTONITE SPATULA
initial priming mix with
water in a ratio 1:4



APPLICATION SCHEDULE

Sealing elements are fitted on external surfaces of walls and slabs.

Kombi cannot be an independent seal of expansion joints.

BENTONITE	
Thickness	2 mm
Parameters	see Cetflex tapes p. 73-74
SHEET	
Thickness	0,75 mm
Zinc amount	> 0, 25 μ

ARTICLE NUMBER	TYPE	TYPE OF MATERIAL	WIDTH [mm]	LENGTH [m]	QUANTITY[.../packs]
208-01	Kombi 101	external corner	125 x 125	-	10 [piece]
208-02	Kombi 102	internal corner	125 x 125	-	10 [piece]
208-03	Kombi 205	simple steel sheet	250	1.0	10 [piece]
208-04	Kombi 125	angle steel sheet	125 x 125	1.0	10 [piece]
208-05	Kombi PR	pipe penetration	-	-	10 [piece]
215-04	Granules	bentonite granules	-	-	25 [kg]
215-02	KH 310	elastic glue	-	-	310 [ml]

