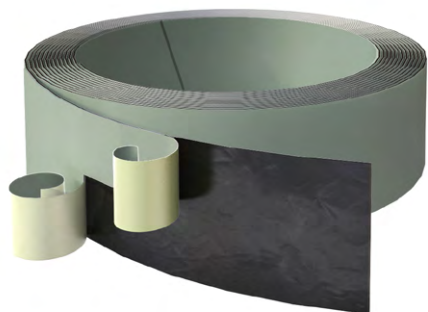


**BITUFLEX** - galvanised steel tape covered with an elastic layer of bitumen sealing construction joints in RC structures.



Elastic bituminous material which guarantees good adhesion to concrete.

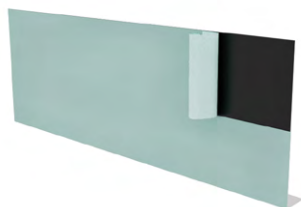
Advantages of the Bituflex system:

- good sealing properties
- easy and fast installation
- simple connection of consecutive elements

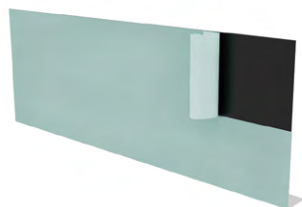
Lack of leakage during water pressure 0.5 MPa.

Standard widths of tapes: 125; 150; 165; 200; 250 mm.

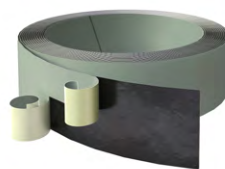
### BITUFLEX TAPES



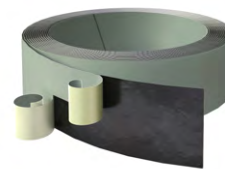
**SHEET WITH MOUNTING FOOT BS**  
one-sided covered with bitumen



**SHEET WITH MOUNTING FOOT BS+**  
double-sided covered with bitumen



**BR**  
rolled sheet one-sided covered with bitumen



**BR+**  
rolled sheet double-sided covered with bitumen

### ACCESSORIES



**KA 18/3**  
clip BR and BS



**MBA 18/3**  
mounting clip to AC



**BR 19/6**  
mounting clip



**KA 8/18**  
mounting clip



**KS-SCREW**  
width: 5 cm  
length: 165 mm

ARTICLE NUMBER	TYPE	ELEMENT	TYPE	WIDTH [mm]	LENGTH [m]	QUANTITY[.../packs]
211-01	BR 150	steel tape	in roll	150	20	20 [m]
211-02	BR 165	steel tape	in roll	165	20	20 [m]
211-03	BR 150+	steel tape	in roll	150	20	20 [m]
211-04	BS 150	steel tape	with mounting foot	150	2.25	22,5 [m]
211-05	BS 165	steel tape	with mounting foot	165	2.25	22,5 [m]
211-06	BS 165+	steel tape	with mounting foot	165	2.25	22,5 [m]
211-07	KA 8/18	clip	stapling	-	-	100 [piece]
211-08	BR 19/6	clip	mounting	-	-	150 [piece]
207-01	KA 18/3	clip	mounting	-	-	50 [piece]
207-02	MBA 18/3	clip	mounting	-	-	10 [piece]
207-03	KS	junction	mounting	50	-	10 [piece]



