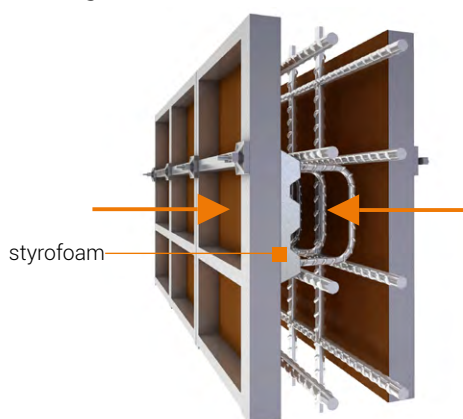


## General recommendations:

- During the installation observe the compulsory security standards - wear protective gloves and work clothes with long sleeves.
- During transport and storage, protect against damage.

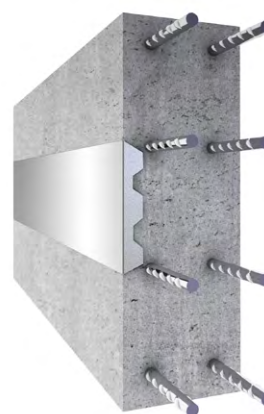
### STEP 1

Installation of Ubox RSH to formworks.  
Connecting anchor channel with reinforcement.



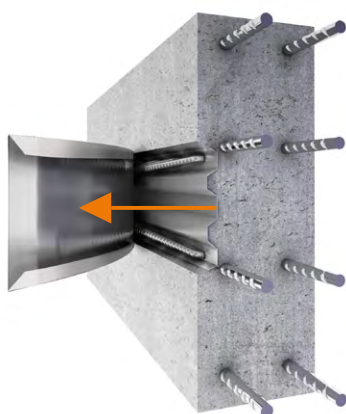
### STEP 2

Closing formworks and concreting.



### STEP 3

Removal of box cover.



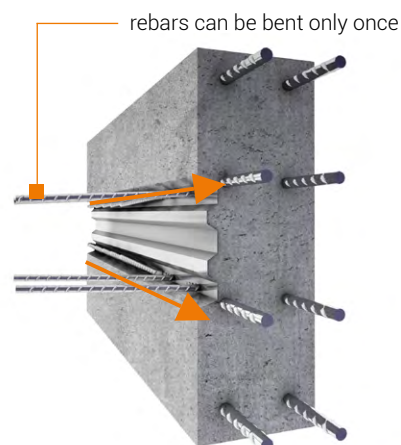
### STEP 4

Exposure of bent rebars.



### STEP 5

Bending the exposed rebars.



### STEP 6

Connecting steel bars with rebars of consecutive elements. Concreting.

