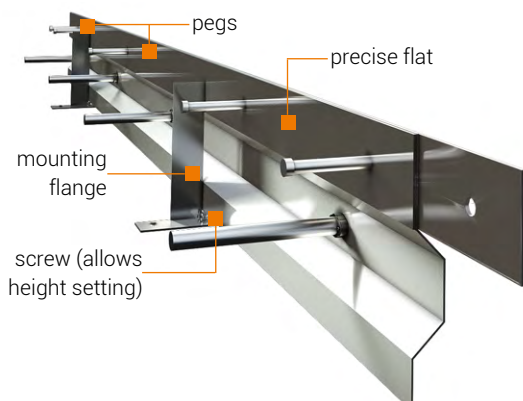




KEYMAX - steel permanent formwork used in construction joints and expansion joints in RC slabs and floors.

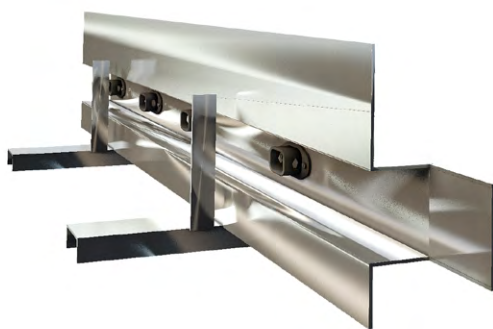


KEYMAX XL

Keymax can be connected with a steel mandrel which transfers horizontal and vertical forces.

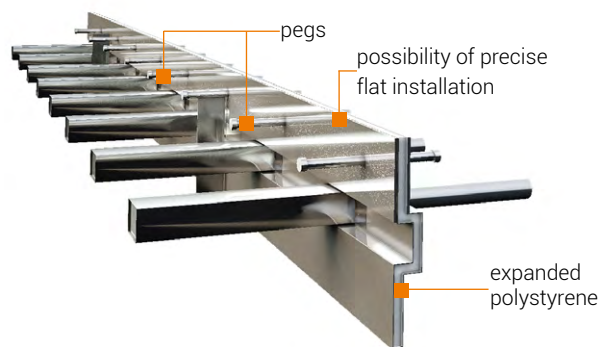
Keymax XL contains flats protecting concrete edge.

Slabs thickness: 15 - 30 cm
Length of element: L = 2.25 m



KEYMAX KX

Profiled formwork with metal sheet without precise flats protecting floor edge.



KEYMAX TO EXPANSION JOINTS

Double profile fulfilled by expanded polystyrene.
Flats protect RC slab edge from damage.

ARTICLE NUMBER	TYPE	ELEMENT HEIGHT [cm]	LENGTH L [m]
770-20	Keymax XL-200	20	2.25
770-25	Keymax XL-250	25	2.25
770-30	Keymax XL-300	30	2.25
771-20	Keymax KX-200	20	2.25
771-25	Keymax KX-250	25	2.25
771-30	Keymax KX-300	30	2.25

Possibility of non-standard order (other heights in the range of 15 - 30 cm, other lengths, etc.) by order.
Types and centres of mandrels - by orders.

