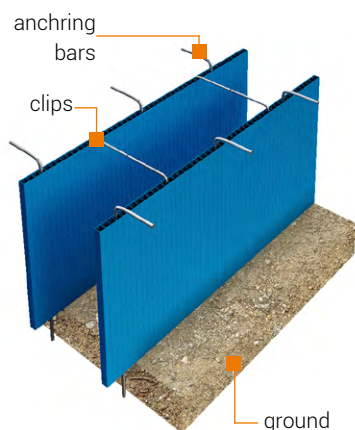
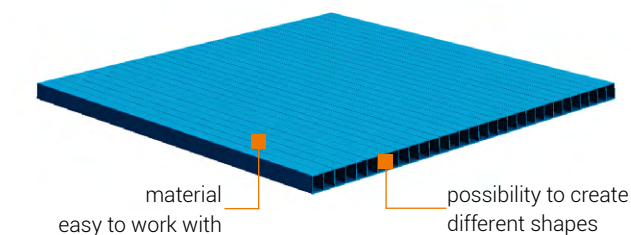


POLIFORM - polypropylene hollow core plank.

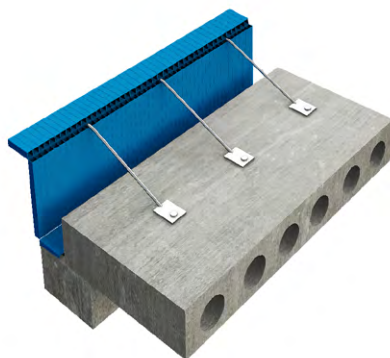
It is used for making:

- formwork for foundations
- formwork for RC slabs
- formwork for openings
- advertising banners

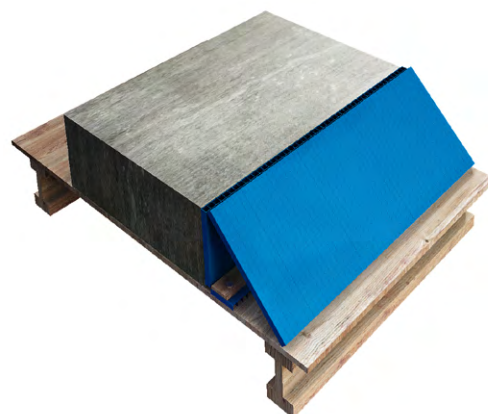
Poliform can be additionally stiffened by putting reinforcement bars into panel holes.



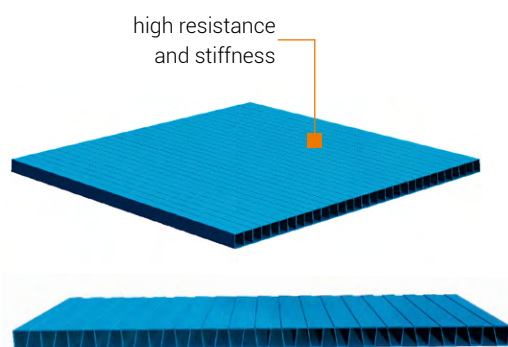
SHORING OF FOUNDATIONS



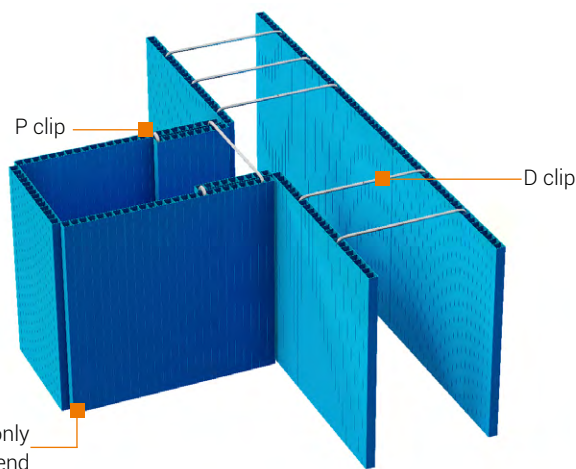
SHORING OF TIE BEAMS AND LINTELS



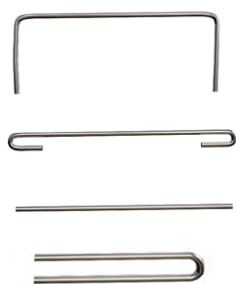
SHORING OF PANELS AND CEILINGS



POLIFORM STRONG



Poliform can be cut and then formed in every shape.



CLIPS

D TYPE

V TYPE

F TYPE

P TYPE

ARTICLE NUMBER	TYPE	DIMENSIONS [m]	MATERIAL	QUANTITY [items/palet]
600-01	Poliform	2.4 x 2.4	polipropylene	100
600-02	Poliform Strong	2.4 x 2.4	polipropylene	100
600-03	D clip	by order	steel	500
600-04	F clip	by order	steel	500
600-05	P clip	L = 0.20	steel	500
600-06	V clip	by order	steel	500

Poliform thickness - 10 mm. Dimensions of clips depend on dimensions of shoring elements.

