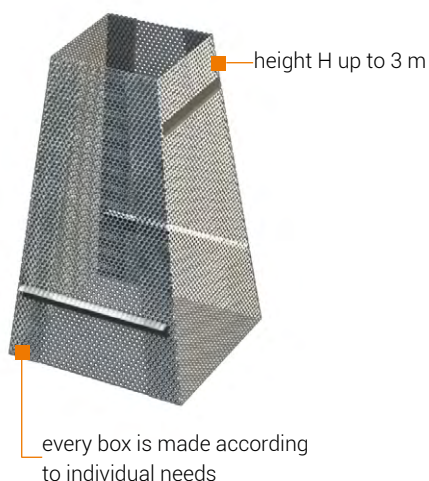


General recommendations:

- During the installation observe the compulsory security standards - wear protective gloves and work clothes with long sleeves.
- During transport and storage, protect against mechanical damage.

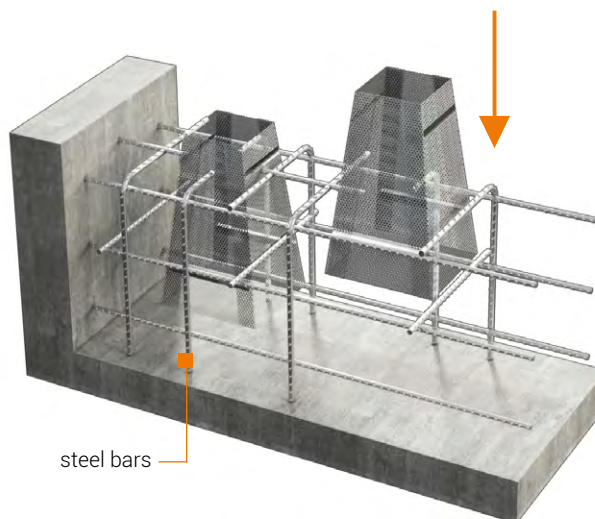
STEP 1

Delivery of Forbox 2000 in the form of final elements.



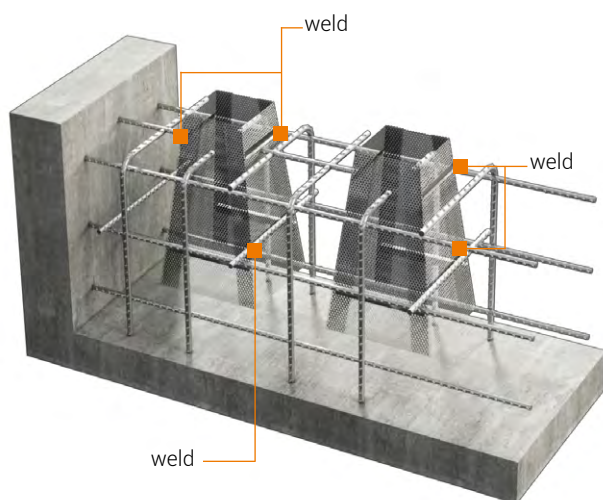
STEP 2

Setting of Forbox 2000 on chosen places.



STEP 3

Heating the Forbox 2000 to reinforcement.



STEP 4

Concreting.

